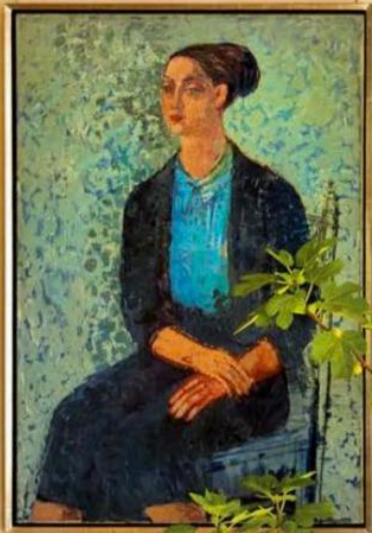


Galerie

Live Artfully



**Painter David Salle
Looks Back & Forward**

**Dream Destinations
We Can't Wait to Visit**

**Gorgeous Homes
in the Hamptons,
Maine, and Beyond**

SUMMER 2020
ISSUE Nº 18

ARTFUL ESCAPES


Vienna Secession café tables and Poul Henningsen chairs join a custom-made banquette in the drawing room of designer Bryan Graybill and attorney Daniel Dokos's East Hampton home, which they built with the architectural firm Historical Concepts; Michael Anastassiades sconces are mounted between the windows, and the portrait was painted by Paulus Franciscus Kromjong. **Opposite:** Graybill devised the Viennese-style bench that wraps around the entry hall's Jamb fireplace, beneath a George Condo painting. For details see Sources.



playing with the past

Inspired by the Arts and Crafts age, designer Bryan Graybill fashions an atmospheric East Hampton retreat for quiet escape and stylish revelry with friends

BY VICKY LOWRY PHOTOGRAPHY BY ERIC PIASECKI
STYLED BY HELEN CROWTHER



The parlor walls, lacquered in a Fine Paints of Europe custom color, provide a glossy backdrop for artworks by Georges-Lucien Guyot and a Thomas Lavin sofa beneath a Tommaso Barbi leaf chandelier. **Opposite:** In the kitchen, which Graybill dubbed the Orangerie, copper lights sourced from the Brimfield flea market are installed above a bronze-top island crafted by Timeless Homes; the built-in refrigerator is by Sub-Zero, and the sink fixtures are by Waterworks.

SOURCES

Items pictured but not mentioned are from private collections. (T) means item is available only to the trade.

All of the following images are © Artists Rights Society (ARS).
Pages 10, 87: 2020 Calder Foundation, New York/ARS, New York. **Pages 13, 104–09:** 2020 The Isamu Noguchi Foundation and Garden Museum, New York/ARS, New York. **Pages 14, 61, 72–75, 78:** 2020 David Salle/VAGA at ARS, NY. Courtesy of Skarstedt, NY. **Pages 30, 40:** Anish Kapoor. All Rights Reserved, DACS, London/ARS, NY 2020. **Page 39:** 2020 ARS, New York/VG Bild-Kunst, Bonn. **Page 48:** 2020 Georgia O'Keeffe Museum/ARS, New York. **Page 65, 68, 69:** 2020 Frank Stella/ARS, New York. **Pages 78, 82:** 2020 ARS, New York/ADAGP, Paris. **Page 89:** 2020 Pollock-Krasner Foundation/ARS, New York. **Page 92:** 2020 ARS, New York/ADAGP, Paris. **Page 97, 103:** 2020 George Condo/ARS, New York.

SMOOTH SAILING

Pages 46–47: Yacht by Sanlorenzo; sanlorenzoyacht.com. **Interior design and select furnishings** by Patricia Urquiola; patriciaurquiola.com. **Page 46:** On upper deck, **Anatra sofas** by Janus et Cie; janusetcie.com. **Caule lamp** from Flos; flos.com. **Mesh deck beds** by Kettal; kettal.com. **Cestita lamp** by Miguel Milá; santacole.com. **Page 47:** In salon, **Beam sofa and Table à Plateau Interchangeable** by Cassina; cassina.com. **Burin Mini table** by Viccarbe; viccarbe.com. In bedroom, **Indochine armchair** by Cassina. **Nuances ottoman** by Gan; gan-rugs.com.

OPEN INVITATION

Pages 62–71: **Architecture** by Randy Correll of Robert A.M. Stern Architects; ramsa.com. **Interior design** by Dara Stern. **Landscape**

design by Justin Terzi; justinterzidesign.com. **Pages 62–63:** On terrace, **chairs** by RH; rh.com. **Lanterns** by Circa Lighting; circalighting.com. **Planters** from Broadview Gardens East Hampton; broadviewgardenseh.com. **Planters custom finished** by Carrie Swim; carrieswim.com. **Kuba cloth runner** from Hemingway African Gallery; hemingwayafricangallery.com. **Brazil hurricanes and faux-shagreen tray** by Mecox; mecox.com. **Hitoshi Kato facet vase** from Roman and Williams Guild; rwguild.com. **Page 65:** In dining room, **light fixture** by Fortuny; fortuny.com. **Wall paint** by Prelude Painting; preludepainting.com. **Custom table** by Classic Cabinets; classiccabinetsandinteriors.com. **Custom chairs** by Luther Quintana Upholstery, Inc. (T); lqupholstery.com. **Suede chair fabric and cowhide rug** by Dualoy; dualoy.com. **Ted Muehling candlesticks** from E.R. Butler & Co.; erbutler.com. **Alfredo vase** by Georg Jensen; georgjensen.com. **Naoya Arakawa highball and St. Louis crystal water goblet** from Roman and Williams Guild. **Pages 66–67:** In library, **wall paint** by Prelude Painting. **Lamp** by Mecox. **Side table** by Matthews & Parker (T); matthewsandparker.com. **Sofa upholstered in fabric** by Rogers & Goffigon (T); rogersandgoffigon.com. **Vedran Jakšić bowl and Warner Walcott vase** from Roman and Williams Guild. **Carl Harry Stalhane vase** from Lost City Arts; lostcityarts.com. **Page 68:** In master bedroom, **basket and side table** by Mecox. **Lineasette porcelain vase** from Lost City Arts. **Custom Luther Quintana chair upholstered in fabric** by Holly Hunt; hollyhunt.com. **Rug** by Stark (T); starkcarpet.com. In master bath, **candlestick sconces**

by RH. **Shades** by Manhattan Shade & Associates; manhattanshade.com. **Wall paint** by Prelude Painting. **Henry tub fittings, Margaux tub, Opus sink fittings, and Crystal vanity** by Waterworks; waterworks.com. **Stool** by Made Goods (T); madegoods.com. **White vase** from Mecox. **Hitoshi Kato vases** from Roman and Williams Guild. **Page 69:** In living room, **wall paint** by Prelude Painting. **Luther Quintana curtains, pillows, sofa, ottoman in fabric** by Holly Hunt. **Custom rug** by Beauvais Carpets (T); beauvaiscarpets.com.

ARTFUL DIPLOMACY

Pages 76–83: **Interior design and select furnishings** by Gert Voorjans; gertvoorjans.com. **Page 79:** In dining room, **wall covering** by Jim Thompson Fabrics; jimthompsonfabrics.com. **Griffe Montnapoleone glassware** by Vetrerie di Empoli; vetreriediempoli.it. **Pages 80–81:** In salon, **silk wall covering** by Tassinari & Chatel; lelievreparis.com. **Page 83:** In master bath, **Arabescato marble, tub, and tub fittings** by Lefroy Brooks; lefroybrooks.com.

PLAYING WITH THE PAST

Pages 96–103: **Interior design and select furnishings** by Bryan Graybill; graybillddb.com. **Architecture** by Historical Concepts; historicalconcepts.com. **Landscape design** by Hooten Land Design; hootenlanddesign.com. **Page 96:** In drawing room, **ceiling paint** by Fine Paints of Europe; finepaintsofeurope.com. **Piano** by Steinway & Sons; steinway.com. **Vintage rug** from Esmaili Rugs; esmailirugs.com. **Banquette upholstered in mohair** by Rogers & Goffigon (T); rogersandgoffigon

.com. **Sconces** by Michael Anastassiades; michaelanastassiades.com. **Windows** by Millwork Artisans; millworkartisans.com. **Page 97:** In entry hall, **ceiling and wall paint** by Farrow & Ball; farrow-ball.com. **Pendant** by Charles Edwards Lighting; charlesedwards.com. **Bench upholstered in wool** by Maharam (T); maharam.com. **Fireplace and surround** by Jamb; jamb.uk.co. **Josef Hoffmann lamp** from Woka Lamps Vienna; woka.com. **Rug** by Michael Del Piero; michaeldepiero.com. **Pages 98–99:** In living room, **pendants** by Roman and Williams Guild; rwguild.com. **Bust** from Beall & Bell; beallandbell.com. **Fireplace** by Jamb. **Sofa upholstered in linen** by de Le Cuona; delecuaona.com. **Vintage Osvaldo Borsani chair upholstered in fabric** by Fortuny; fortuny.com. **Page 100:** In parlor, **wall and ceiling paint** by Fine Paints of Europe. **Sectional upholstered in fabric** by Rosemary Hallgarten; thomaslavin.com. **Page 101:** In kitchen, **refrigerator** by Sub-Zero; subzero-wolf.com. **Range** by Lacanche; lacanche.com. **Sink fittings** by Waterworks; waterworks.com. **Stool** by Garde; gardeshop.com. **Page 102:** In master bedroom, **sheets and cashmere blanket** by Sferra; sferra.com. **Pillows and curtains** by de Le Cuona. **Coverlet** by Hollywood at Home; hollywoodathome.com. **Chandelier** by Fortuny. **Page 103:** In master bath, **sconces** from Woka Lamps Vienna. **Tub fittings** by Waterworks. **Stool** by Garde. **Tub** by Catchpole & Rye; catchpoleandrye.com. **Flooring** by ABC Stone; abcworldwidestone.com.

MAINE ATTRACTION

Pages 104–09: **Architecture** by Isamu Noguchi and Wallace K. Harrison. **Restoration** by Dan McGraw of Atlantic Engineering; 207-667-3013.

GALERIE (ISSN 2470-9964), Volume 5, Issue 2, is published quarterly by Galerie Media Group LLC, 101 Park Avenue, 4th Floor, New York, NY 10178 USA. Lisa Fayne Cohen, Founder/Editorial Director; James S. Cohen, Chairman; Adam I. Sandow, Chairman, SANDOW. **Principal office:** Galerie Media Group LLC, 101 Park Avenue, 4th Floor, New York, NY 10178. **Editorial and advertising offices:** GALERIE, 101 Park Avenue, 4th Floor, New York, NY 10178.

Subscriptions: Visit galeriemagazine.com, or call 818-487-2019 (in the U.S.) or 855-664-4228 (toll-free, outside the U.S.).

Subscription prices: United States, \$39.95 for one year (outside the U.S., add \$40); \$12.95 per single copy. For customer service and changes of address, write to GALERIE Magazine, Attn: Customer Service Department, P.O. Box 16076, North Hollywood, CA 91615-6076. Allow 4–6 weeks to receive first copy.

Editorial inquiries: Write to GALERIE, 101 Park Avenue, 4th Floor, New York, NY 10178, or to editor@galeriemagazine.com.

GALERIE is not responsible for unsolicited manuscripts or art, and such material will not be returned.

Publisher assumes no responsibility for the claims made by advertisers or the merits of their respective products and offerings.

Reprints and permissions: No part of GALERIE may be reproduced or transmitted in any form or by any means, electronic or mechanical, without the express written permission of the publisher.

GALERIE is a registered trademark of Galerie Media Group LLC. All rights reserved. GALERIE © 2020.