

# CALIFORNIA HOMES

The Magazine of Architecture  
The Arts & Distinctive Design

## MODERN *design*

PASADENA  
SAN FRANCISCO  
SANTA BARBARA

*A Tuscan Style  
Desert Retreat*



\$5.99 US/CAN FEBRUARY 2012

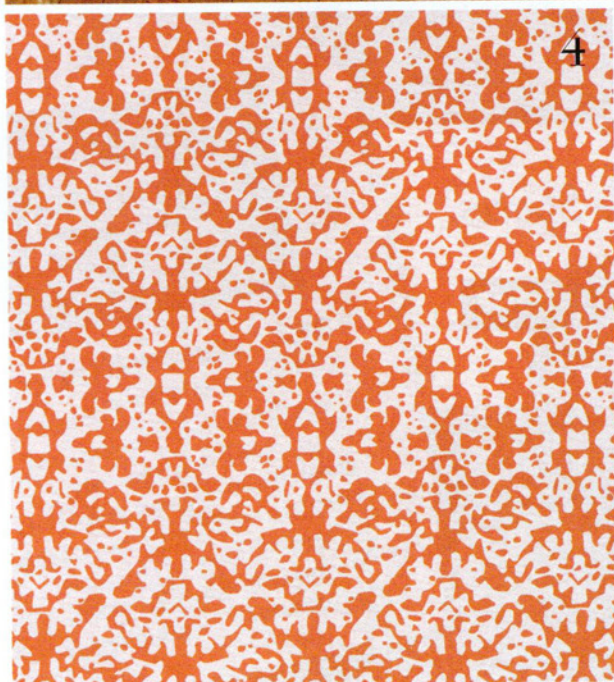
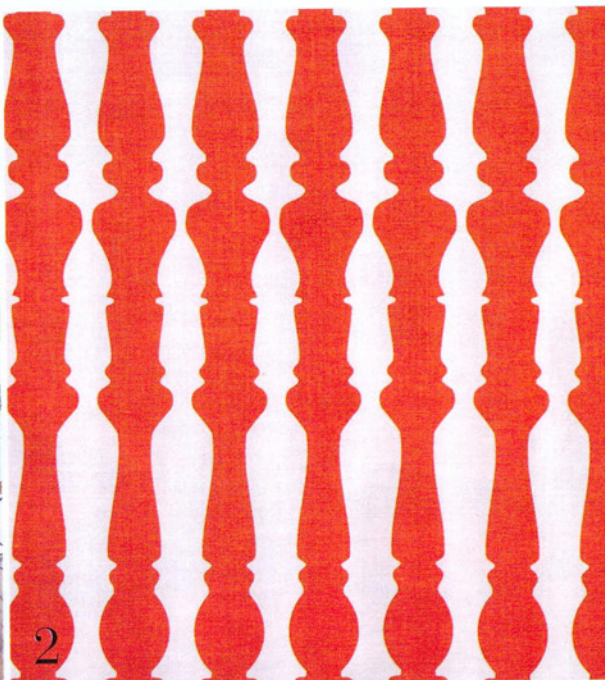




# tangerine tango

A Few Variations Of The Pantone Color For 2012

BY KENDRA BOUTELL



- 1} **Raoul Textiles** | The fabric on the George Smith Penny Chair is Dominic in Husk. This is a Raoul Textiles for George Smith fabric that is hand-printed on upholstery weight Belgian linen. [www.raoultextiles.com](http://www.raoultextiles.com)
- 2} **Christopher Farr** | A crisp print designed by Ilse Crawford of Studioilse. 100% linen. [www.christopherfarrcloth.com](http://www.christopherfarrcloth.com)

- 3} **ROMO** | Quadra Mango is a graphic print in a linen and cotton blend. [www.romo.com](http://www.romo.com)
- 4} **Rosemary Hallgarten** | The Glaze design is a mottled pattern inspired by the work of British ceramist Janice Tchalenko. Fabric shown is a linen and cotton blend. It can also be ordered in Sunbrella fabric for outdoor use. [www.rosemaryhallgarten.com](http://www.rosemaryhallgarten.com)