

try here—just  
ic journey with  
astern spice

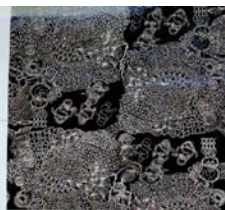
insira in Raven by  
le 414  
on in Lacquer Red/  
tschwig & Fils, circle 415  
ees in Aqua by  
Fan Cloth, circle 416  
alhouette wall covering  
F. Schumacher & Co.

l linen by Jen Thompson.

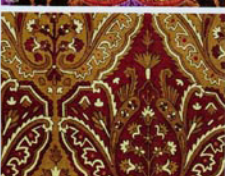
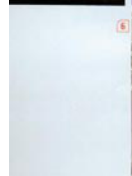
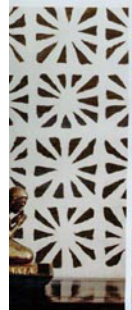
Crewel wool and cotton  
F. Schumacher & Co.

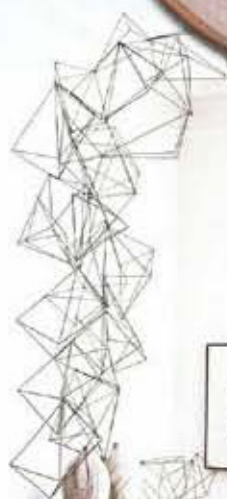
ycled mulberry and  
y Weltzner Limited.

n and polyester in noir  
iles, circle 421



fabric@wallcovering





## steel yourself

Test your metal with streamlined accents

1. Lori Weitzner's nickel curtain holdbacks: Zanzibar in silver and gold, Argana in gold and silver with leather cord, Stonehenge in silver with leather cord, and Calder in silver by Samuel & Sons, circle 657
2. Callisto mirror in burnished 12-karat white gold and blue clay by Maya Romanoff Corporation, circle 658
3. Wormwood mirror in gypsum cement with Warm Silver finish by Ruth Livingston Studio, circle 659
4. Lome and Donna andirons in French Black Acid finish by Philip Nimmo Ironworks, circle 660
5. Alutable recycled-aluminum bowl, plate, and tray by Regenesi, circle 661
6. Dahlia vinyl placemats in black, gunmetal, and gold by Chlewich, circle 662
7. Lions and iron set in white-finished bronze by John Lyle Design, circle 663
8. Wire Crystals sculptures in clear-coated raw wire with brass holds by Gold Leaf Design Group, circle 664

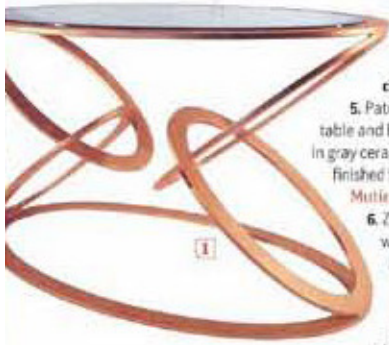
accessories



Accent pieces that appear to defy gravity

## balancing acts

1. Ellittico cocktail table in glass and hand-wrought iron in white-gold-leaf finish by Philip Nimmo Ironworks. **circle 497**
2. Manta in birch plywood with drawer in white and red high-gloss polyurethane finish by *Dune*. **circle 498**
3. Buffalo Jump cocktail tables in steel with polished-nickel finish and solid-surface top by Powell & Bonnell. **circle 499**
4. Nendo's Cube in white varnished hard-polyurethane foam by Ateliers. **circle 500**
5. Patricia Urquiola's Big Bug table and Baby Bug stool/table in gray ceramic tile with dark gray-finished iron frame by Ceramiche Mutina. **circle 501**
6. Zig Zag in aluminum with Persimmon finish by Leavitt Weaver. **circle 502**
7. Balancing Boxes iron side table painted in black by Porro. **circle 503**
8. Dearville table in stainless steel with maple veneer top by Cumberland Furniture. **circle 504**
9. Mario Mazzer's Duffy table in opaque white and light blue polyurethane by Bonaldo. **circle 505**



## furniture

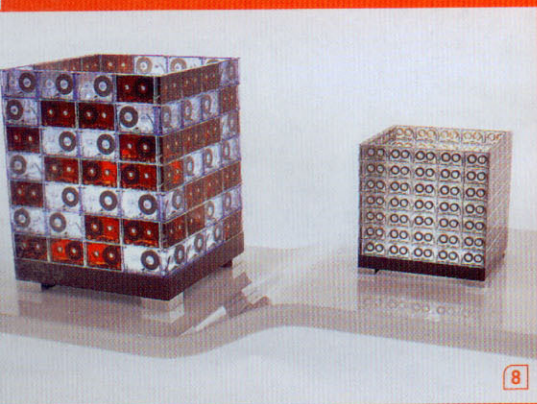




# circular logic

Lighten up with these bright ideas

1. Nobel 2065 and 2060 frosted-glass pendants in chrome finish by **Vibia**. circle 574
2. Caviar steel and smoke-glass cluster in brown nickel by **Arteriors**. circle 575
3. FDV Collection's Sibilla glass pendant by **Leucos**. circle 576
4. Focal Point table lamp in Arabescato marble and stainless steel with polyester shade by **Chakib Richani Collection**. circle 577
5. Striped Bocce handblown-glass table lamp in Newport with acrylic base, brushed-nickel hardware, and silk dupioni drum shade in white by **Tracy Glover Objects and Lighting**. circle 578
6. Spin powdercoated-aluminum pendant in lime and raspberry by **Lampa**. circle 579
7. Blossom stainless-steel pendant with hand-thrown porcelain shades in Glacier glaze by **Lesley Anton**. circle 580
8. Rewind Y lamp made with compact cassettes in translucent and amber and New Message lamp made with answering-machine tapes in translucent by **Transparent House**. circle 581
9. Lesslamp ceramic pendant in black lacquer finish by **Metalarte**. circle 582 ➔





# lighting



## life aquatic

Somewhere on a planet far, far...under the sea

1. Oyster & Swarovski enameled wood chandelier with polished brownlip oysters and Swarovski crystals by *Designlush*. circle 505
2. Clam Shell sconce in hand-carved peepier by *Latesia & Company*. circle 506
3. Pendant Chandelier #G9447 in brushed nickel finish with hardback canvas shade by *Lamps Plus*. circle 507
4. Nara pendant in American art glass in blue/white by *Derek Marshall Lighting*. circle 508
5. Agate limited-edition lamp in lost-wax bronze, with sliced agates and silk shade in beige by *Tuell + Reynolds*. circle 509
6. Stormy metal light with removable, washable elasticized fabric shades in white by *Axo Light*. circle 510
7. Wire Nest lamps in matte iron wire by *Gold Leaf Design Group*. circle 511
8. Binnacle satin-nickel pendant with hand-thrown porcelain drops, all with unglazed exteriors and Sea Green-glazed interiors, and stainless-steel cables by *Lesley Anton*. circle 512
9. Pietra Santa sconce in handwrought iron and blue agates by *Philip Nimmo Ironworks*. circle 513
10. Slim Shade(E) sconce in folded aluminum with pebble-silk shade, both in Burnout finish by *Babette Holland*. circle 514

