

ARCHITECTURAL DIGEST

THE INTERNATIONAL MAGAZINE OF DESIGN

DECEMBER 2010

MAGICAL PLACES



White-Hot Miami Penthouse
Actor Rob Morrow at Home in L.A.
Modern Masterpiece in Oregon
TIMELESS WATCHES

U.S. \$5.99/FOREIGN \$6.99



www.ArchitecturalDigest.com

Phulay Bay Reserve, a new Ritz-Carlton resort in Thailand, has a templelike entrance. See page 63.



**Find More at
ArchitecturalDigest.com**

Celebrity collections, terrific finds for under \$100, fireplaces, ski country homes, dressing rooms...

continued from page 20

Departments

- 24 **THIS MONTH ON ARCHITECTURALDIGEST.COM**
- 30 **LETTERS**
- 34 **CONTRIBUTORS**
- 36 **DISCOVERIES BY DESIGNERS**
Architectural Digest's Editors Present Designers' Sources
- 52 **JEWELRY: MAKING TIME**
Eleven New Watch Designs that Mark the Minutes with Style and Precision
- 63 **AD TRAVELS: THAILAND'S PHULAY BAY**
Overlooking the Andaman Sea, the Ritz-Carlton Reserve Summons Serene Luxuries
Architecture and Interior Design by Lek Bunnag
Text by Susan Sheehan
Photography by Robert McLeod
- 70 **YACHTS: PITCH PERFECT**
Charting a Firmly Contemporary Course for Sky
Naval Architecture by Frank Laupman
Interior Design by Mojo-Stumer Associates
Text by Gerald Clarke
Photography by David Churchill

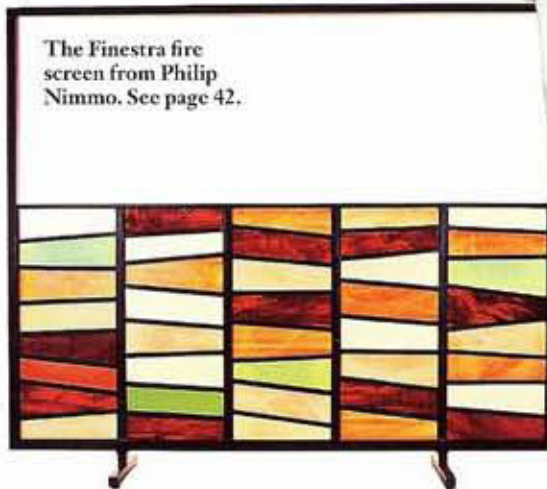
76 **ESTATES: EDITORS SELECT PROPERTIES AROUND THE WORLD**
Maine, England, Spain...

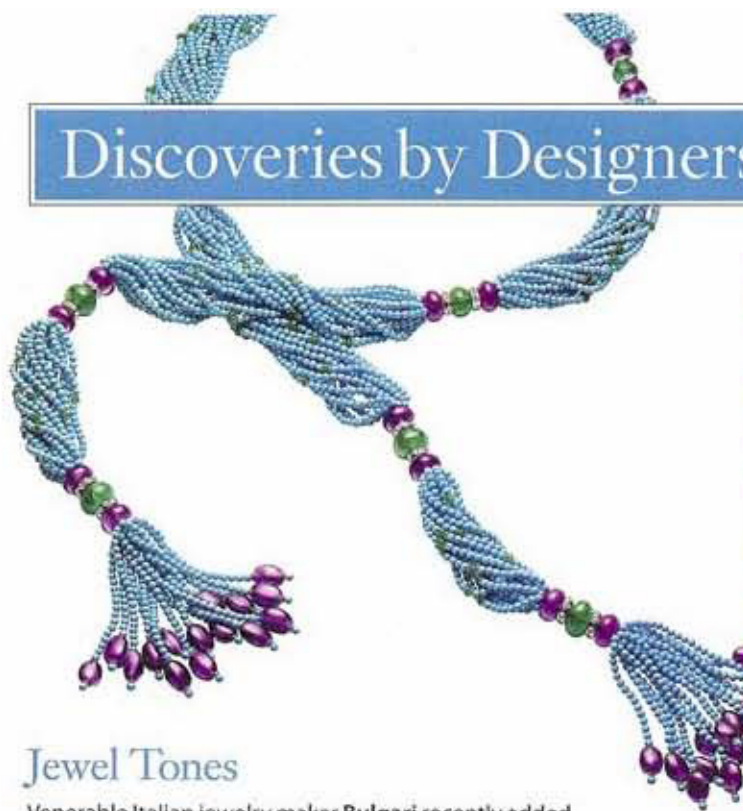
AD DIRECTORY
A Listing of the Designers, Architects and Hotels Featured in This Issue Can Be Found at ArchitecturalDigest.com



A whimsical watch from Van Cleef & Arpels. See page 52.

The Finestra fire screen from Philip Nimmo. See page 42.

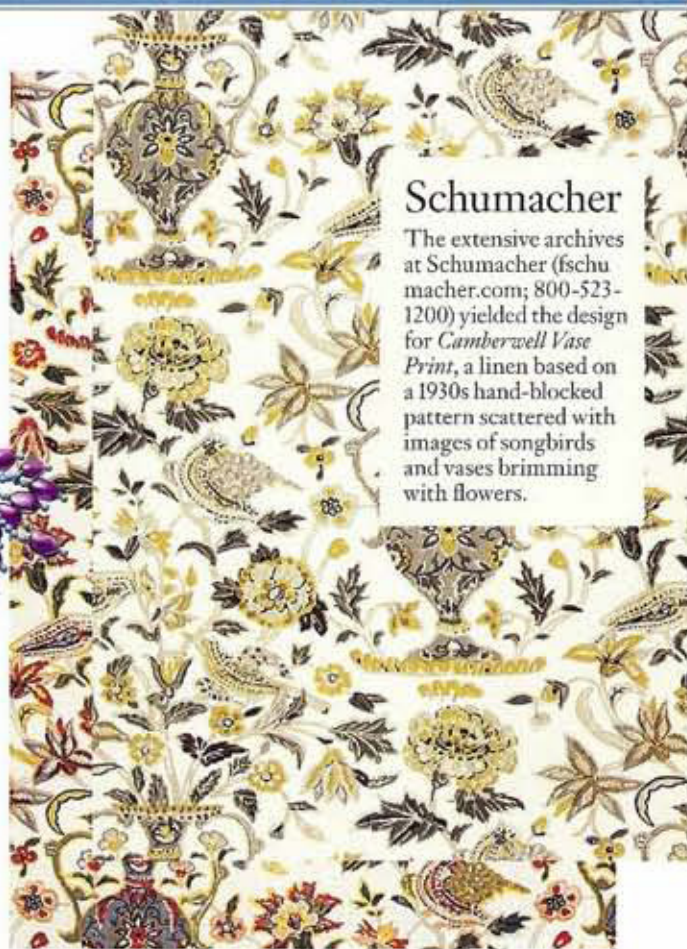




Jewel Tones

Venerable Italian jewelry maker **Bulgari** recently added a dramatic new scarf necklace, \$200,000, to the company's High Jewelry Collection. Strands with hundreds of turquoise beads—punctuated by emerald beads—are strung through amethyst and larger emerald beads, which are in turn separated by white-gold roundels of pavé diamonds. Each strand terminates in more amethysts and turquoise beads.

Bulgari, 800-285-4274, www.bulgari.com



Schumacher

The extensive archives at Schumacher (fschumacher.com; 800-523-1200) yielded the design for *Camberwell Vase Print*, a linen based on a 1930s hand-blocked pattern scattered with images of songbirds and vases brimming with flowers.

Philip Nimmo

The Pietra Santa, composed of mounted geodes, and the Mondrian-inspired Finestra fire screens from Philip Nimmo Ironworks can be found at Thomas Lavin (www.thomaslavin.com; 310-278-2456) in Los Angeles.



Dorya

A tailored profile and chic details—decorative nailheads and a tufted back, as well as myriad finish options—define the Izmir sofa from the Contemporain Collection at Dorya (www.doryainteriors.com; 336-885-8818).

continued on page 44



Fused Box

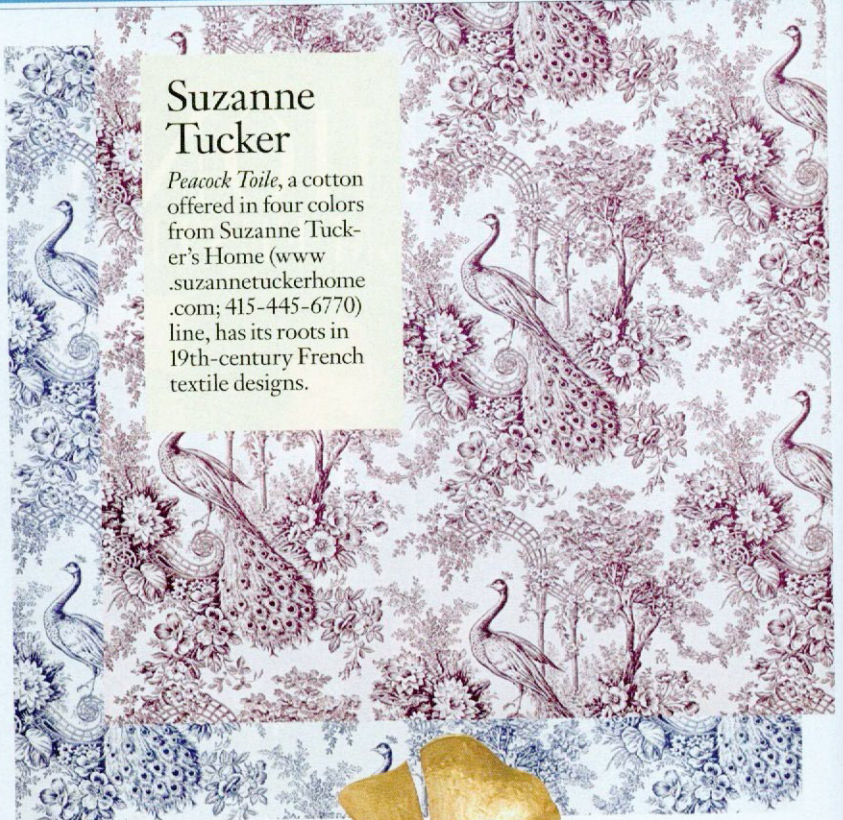
A large measure of the credit for reviving the art of glass fusing belongs to Michael and Frances Higgins, whose company, **Higgins Glass Studio**, founded in the late 1940s, made an assortment of tableware, lighting and sculptural pieces. The company continues to make the colorful products, including a light, \$1,200, at its studio in Riverside, Illinois.

Higgins Glass Studio, 33 E. Quincy St., Riverside, IL 60546
708-447-2787; www.higginsglass.com



Simply Shining

Light streams from the Acorn table, \$787.50, from Shiner International. It can be found at Mecox (www.mecoxgar dens.com) and at Lillian August (www.lillianaugust.com) locations.



Suzanne Tucker

Peacock Toile, a cotton offered in four colors from Suzanne Tucker's Home (www.suzannetuckerhome.com; 415-445-6770) line, has its roots in 19th-century French textile designs.

Garden Glow

The New Leaf sconce, \$8,400 a pair, by Marc Bankowsky is among the contemporary pieces showcased at New York dealer Maison Gérard (www.maisongerard.com; 212-674-7611).



Heart of Fire

London antiques dealer Howe (www.howlondon.com; 44-20-7730-7987) crafts firedogs, \$885 a pair, with a rustic feel. Based on a 19th-century design, a brass heart is affixed to the rough metal andiron. □

