

RIVIERA

COUNTY | MODERN LUXURY™



101
FABULOUS
THINGS
TO DO

STYLE
HOME
CULTURE
FOOD
AND MORE!

Best of the cities '09!

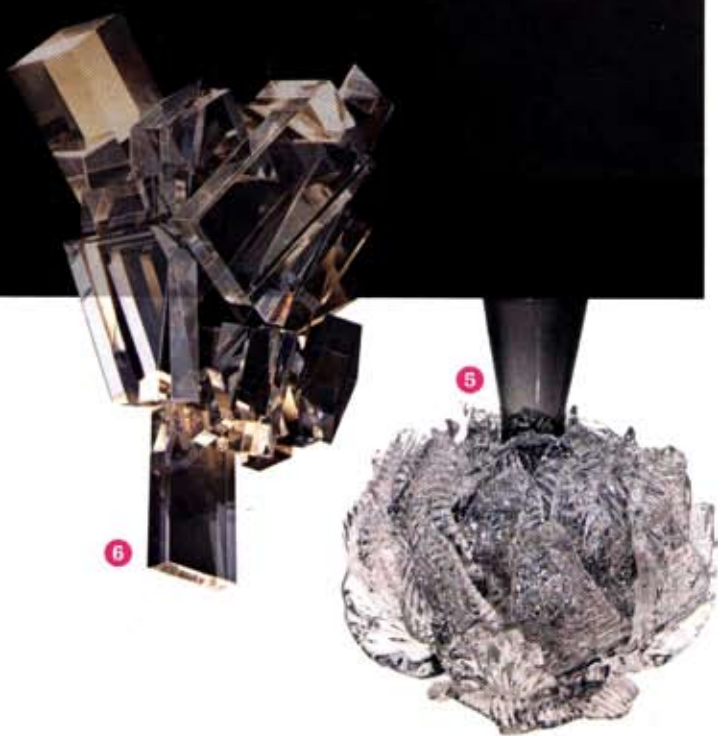
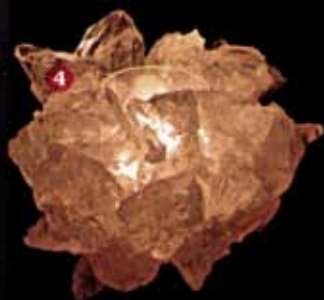
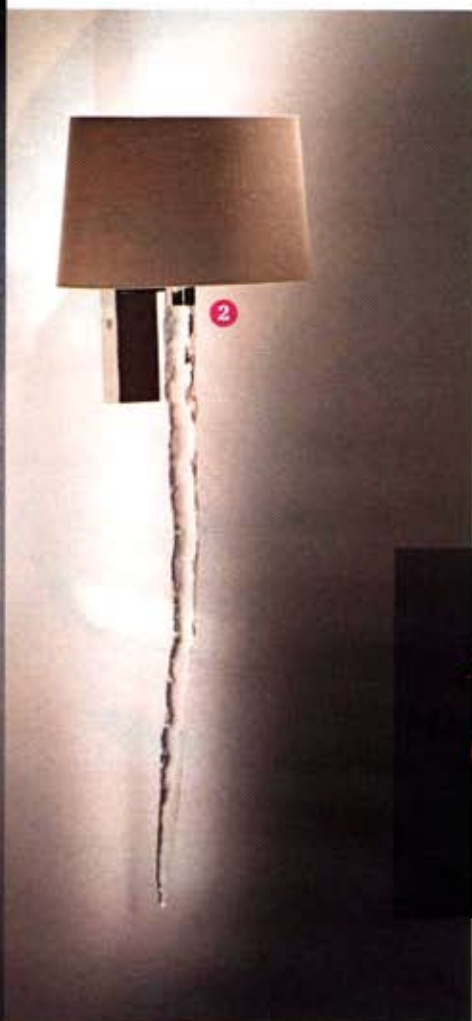
+PLUS

MEET O.C.'S BROTHERLY BABES

INN-CREDIBLE MIAMI BEACH!

LOVE, ITALIAN FOOD-STYLE

AND ALL THE BEST PARTIES



So Chill!

The ice storm cometh—in glacial chunks of rock crystal and hand-blown glass

| By Rebecca Sherman |

The local design forecast predicts a wintry blast guaranteed to glam up your igloo. Warm up under the cozy glow of hand-blown crystal lighting, including Porta Romana's dramatic Icicle wall sconce, which is so realistic it almost looks wet; William Haines' classic chunks of crystal, formed into a pair of limited-edition sconces, based on his original 1952 creation; and Chameleon Collection's fanciful floral sconce. Tabletop accessories are trending toward the permafrost, too. We're smitten by McCoy Designs' totally clear, rock crystal votives that have a purer quality than their predecessors; and Esque's hand-blown Artichoke vase is shrouded by delicate, frosted leaves. **R**

1. Studio Italia Graffiti Collection etched glass pendant at Kenro Light, Pacific Design Center, kenrolight.com.
2. Porta Romana Icicle sconce at Walter Lee Culp Associates, wculp.com, to the trade.
3. Chameleon Collection Fine Lighting crystal sconce, Thomas Lavin, Pacific Design Center, thomaslavin.com.
4. Crystal Ice votive by McCoy Designs, \$585 at Roger's Gardens, Corona del Mar.
5. Esque Artichoke vase, hand-blown crystal, \$370 at A'marees, Newport Beach.
6. William Haines Ice Crystal sconce, at Pacific Design Center, williamhaines.com.