

## KYOTO COLLECTION STORY

Jiun Ho expands the design dialogue he began with his Japan collection in a new textile line that celebrates the beauty and culture of Kyoto. A mix of outdoor and indoor, the seven new fabrics follow the traditional techniques of Japanese textile making. Each reveals subtle details, each explores the rich interplay of colors that create a feeling of antiquity, and all are a delicious blend of natural fibers. The Kyoto collection deepens Jiun's vision of modernity and textured tranquility, all wrapped in luxe materiality.

Check your favorite fabric swatches to order samples.



JIUN HO  
TEXTILE  
KYOTO COLLECTION





I was 9 years old when I visited Kyoto for the first time. It was cherry blossom time and I had never experienced anything like the beauty that was everywhere I looked, a memory that has stayed with me all my life. I return to Kyoto periodically; biking around this historic, complex, and spiritual city. I find inspiration in every garden, alley, corner, and temple. My new textile collection honors Kyoto, its pieces are my attempt to translate the confluence of meaning, memory, and inspiration that this special city evokes in me. I am so happy to have the opportunity to share it all with you in these pages.

With appreciation,  
Jiun Ho

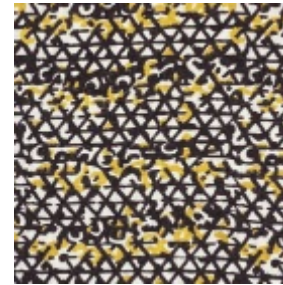


## HANAKAGO

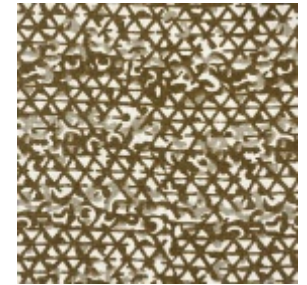
Named for the Japanese flower baskets traditionally woven of a tangle of bamboo, this special indoor/outdoor print features an organic graphic design punctuated by colorful pops.



1089-08\_Taro



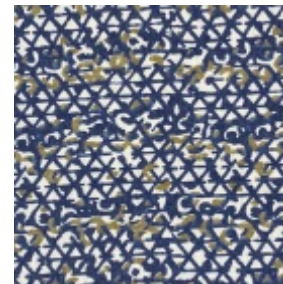
1089-19\_Black Sesame



1089-29\_Bronze



1089-39\_Japanese Maple



1089-69\_Indigo



1089-89\_Matcha

Primary Fiber Content: 100% UV Polyester

Fabric Type: Print Performance Outdoor

Performance: Performer High Use Indoor/Outdoor

Shown Direction: Up the Roll

Seam Slippage: WARP>200

Wear: Martindale 80,000+









## YUGEN

Yugen is an aesthetic concept relating to wabi-sabi, and implies mystery and profundity. The indoor/outdoor chenille textile inspired by this concept has a matte finish and a soft hand.



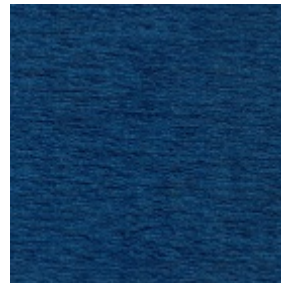
1085-01\_Washi



1085-06\_Taro



1085-15\_Rock Garden



1085-66\_Mizu



1085-93\_Wasabi

Primary Fiber Content: 100% UV Polyester

Fabric Type: Texture Plain Chenille Performance Outdoor Contract

Performance: Performer High Use Indoor/Outdoor

Shown Direction: Up the Roll

Light Fastness: 4/5

Wear: Wyzenbeek 60,000+







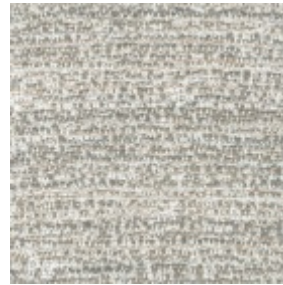






## UMAMI

A delicious, heavy blend of yarns, colors, and textures, the Umami textile is woven by a boutique linen mill in Belgium.



1079-09\_Sea Salt



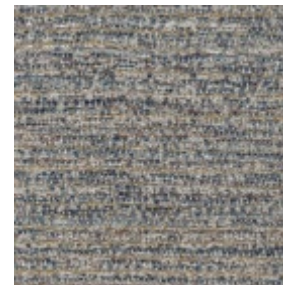
1079-19\_Shiitake



1079-29\_Whiskey



1079-49\_Toro



1079-66\_Nami



1079-96\_Shiso

Primary Fiber Content: 79% Linen

Fabric Type: Texture Plain Jacquard Boucle Slub

Performance: N/A

Shown Direction: Up the Roll

Use: Fabric Upholstery Cushions

Wear: Martindale 20,000+



## TATAMI

This substantial indoor/outdoor fabric, inspired by Japanese floor mats, has an uneven rib effect and a dry hand, creating a modern appeal.



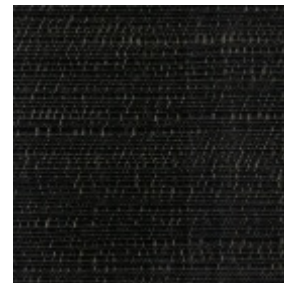
1083-01\_Washi



1083-05\_Pearl



1083-10\_Shiitake



1083-17\_Sureto

Primary Fiber Content: 100% Solution Dyed Polypropylene  
Fabric Type: Texture Plain Boucle Outdoor Slub Ottoman/Rib  
Performance: Performer High Use Indoor/Outdoor

Shown Direction: Up the Roll  
Seam Slippage: N/A  
Wear: Wizenbeek 35.000+



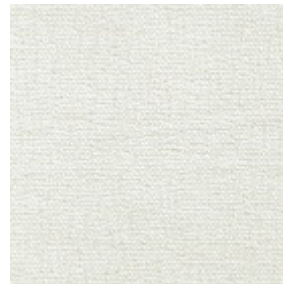




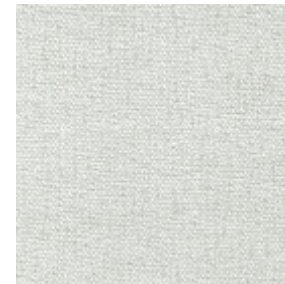


## LAVA

True linen look, this workhorse fabric will perform outdoors and in. Subtle colorations all nod to the linen inspiration and to the natural stone that inspired the texture.



1027-02\_Rice Paper



1027-03\_Pearl



1027-04\_Salt



1027-08\_Fawn



1027-64\_Glacier

Primary Fiber Content: 100% Solution Dyed Polypropylene

Fabric Type: Plain

Performance: Performer High Use Indoor/Outdoor

Shown Direction: Up the Roll

Design Style: Plain/Solid

Wear: Martindale 40,000+

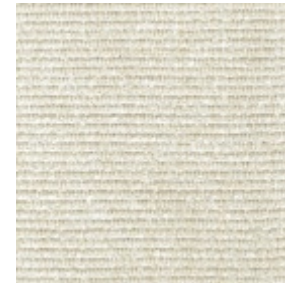


## AMI

A luxurious and weighty indoor/outdoor ribbed texture, Ami uses a partially buried bouclé for added dimension.



1084-01\_Washi



1084-04\_Rice Paper



1084-07\_Enoki







## SALAR II

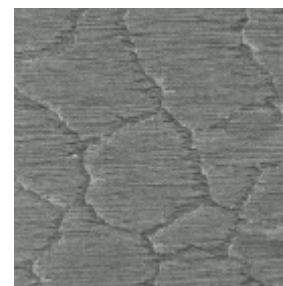
Salar is taken from a photograph of the salt flats of the Atacama desert and rendered in a fine chenille with a glint of sheen highlighting the shadowed weaves.



JIUN HO  
EXPERIENCE



1086-04\_Salt



1086-10\_Platinum



1086-17\_Onyx

Primary Fiber Content: **100% Polyester**

Fabric Type: **Jacquard**

Performance: **N/A**

Shown Direction: **Up the Roll**

Use: **Fabric Upholstery Cushions**

Wear: **Martindale 25,000+**



## RAKU

Raku is a Japanese pottery technique that creates unpredictable and beautiful surface effects. Like its namesake, this indoor/outdoor fabric has a cracked texture and organic multi-color appeal.



1080-03\_Rice Paper



1080-10\_Shiitake



1080-29\_Kintsugi



1080-65\_Mizu



1080-96\_Matcha

Primary Fiber Content: 100% Polypropylene  
Fabric Type: Performance Outdoor Contract

Shown Direction: Up the Roll  
Seam Slippage: N/A



