

The background is an abstract composition of broad, expressive brushstrokes. A series of vertical, slightly wavy strokes in a warm, golden-yellow hue dominate the left and central portions of the frame. Overlaid on these are several horizontal and diagonal strokes in a dark, charcoal grey color. These grey strokes vary in thickness and intensity, some appearing as sharp, dark lines while others are more blended and textured. The overall effect is one of layered, organic movement, reminiscent of a watercolor or mixed-media painting.

MALABARES



Expressing the Virility of Life through Objects and Materials



Introducing MALABARES

MALABARES, featured in these pages, is Alexander Lamont's 2023 collection; a series of design studies exploring instances of flow, asymmetry, surface and substance through exquisite handcrafted materiality. The collection was conceived by Colombian designer Alberto Velez for Alexander Lamont.

In Spanish, MALABARES refers to a series of balancing acts: a flow of movement executed with a combination of skill and grace. The works were born during a challenging time when sudden change was imposed on all of us. They reflect the expression of human creativity in finding graceful solutions to adjust and accept new lifestyle realities and priorities. Asymmetry becomes a most important element of the series, an instigator of movement that ironically allows balance.

Alexander Lamont's signature straw marquetry and shagreen in light or dark tones envelop the pieces, meeting with organic cast brass accents that provide tactile surfaces and architectural detail. The handcrafted materials in neutral, quiet palettes maintain a tranquil but lavish presence that both enhances and controls the flow and form of each piece.

Malabares is an important collection for 2023, an expression of enlightened modern materiality



Estribor Drinks Cabinet | Ebony

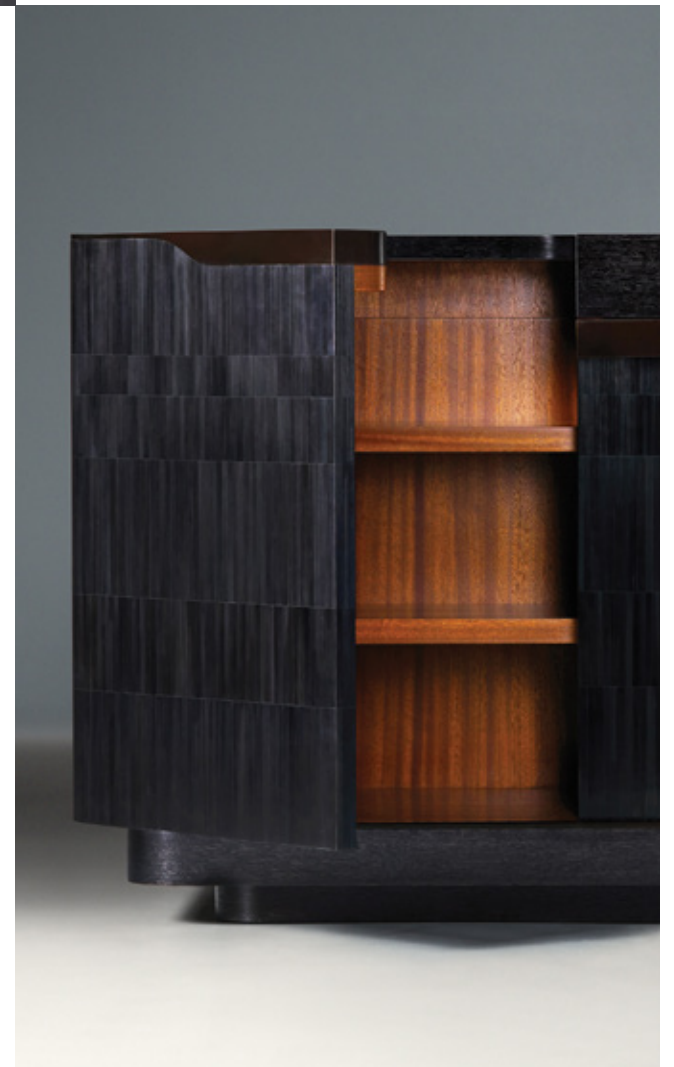


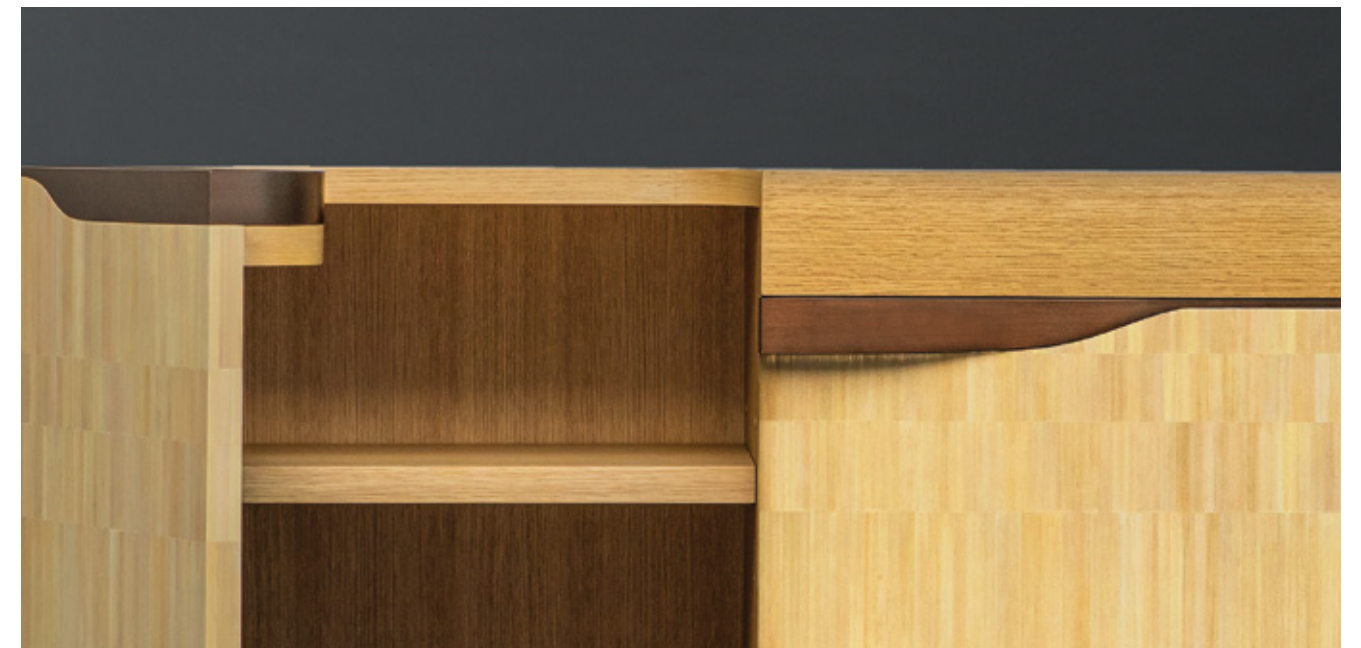
Estribor Drinks Cabinet | Ebony

The Estribor drinks cabinet is a monumental yet gentle piece. Asymmetrical doors flow into each other with visual continuity and a gentle curve that invites the touch. The exterior is meticulously inlaid with straw marquetry in a staggered pattern that draws the eye around the piece. The Ebony cabinet features a tone-matched Black Oak top and warm mahogany interior. Sculptural bronzed hardware creates visual detailing and tactile pleasure.

W 50 D 21 1/4 H 33 1/4 in
W 127 D 54 H 84.5 cm







Estribor Drinks Cabinet | Beechwood

A sculptural cabinet that has been skillfully bench-made and features asymmetrical doors that flow into each other, and beautiful tactile hardware. The exterior is meticulously inlaid with Beechwood straw marquetry in a staggered pattern that draws the eye around the piece. Matching the tone of the straw is an oak top and interior.

W 50 D 21 1/4 H 33 1/4 in
W 127 D 54 H 84.5 cm



Pontoon Nightstands

Thoughtfully arranged for bedside functionality, the Pontoon nightstand is a series of gently cascading volumes, including a drawer, that float between shagreen and oak veneer. Available in right or left orientations and also practical as a side or end table in a living context. A bronzed-edge channel on top allows for the elegant exit of wires. Designed by Alberto Velez for the Malabares collection.

W 31 D 23 ⁵/₈ H 23 in
W 78.5 D 60 H 58.5 cm







Corteza Dining Table | Natural Speckle

A strong circle of French Oak with subtle inlaid pattern is raised on a shagreen-wrapped sculptural base with recessed surfaces in grooved wood and bronze to draw the eye and create a sense of flow. Designed by Alberto Velez for the Malabares collection.

Ø 63 H 29 ³/₄ in
Ø 160 H 75.5 cm





Corteza Dining Table | Natural Chocolate

A functional dining table raised on a finely detailed sculptural base lusciously wrapped in Natural Chocolate shagreen.

Ø 63 H 29 ³/₄ in
Ø 160 H 75.5 cm

Pontoon Cocktail Table

Layers of honed natural shagreen float over austere French Oak forming a soft rectangular volume with split levels connected by tangent, flowing movement. Part of the Malabares collection, this piece embodies ideas of asymmetry and flow.

W 37 L 58 H 15 1/2 in
W 94 L 147.5 H 39.5 cm

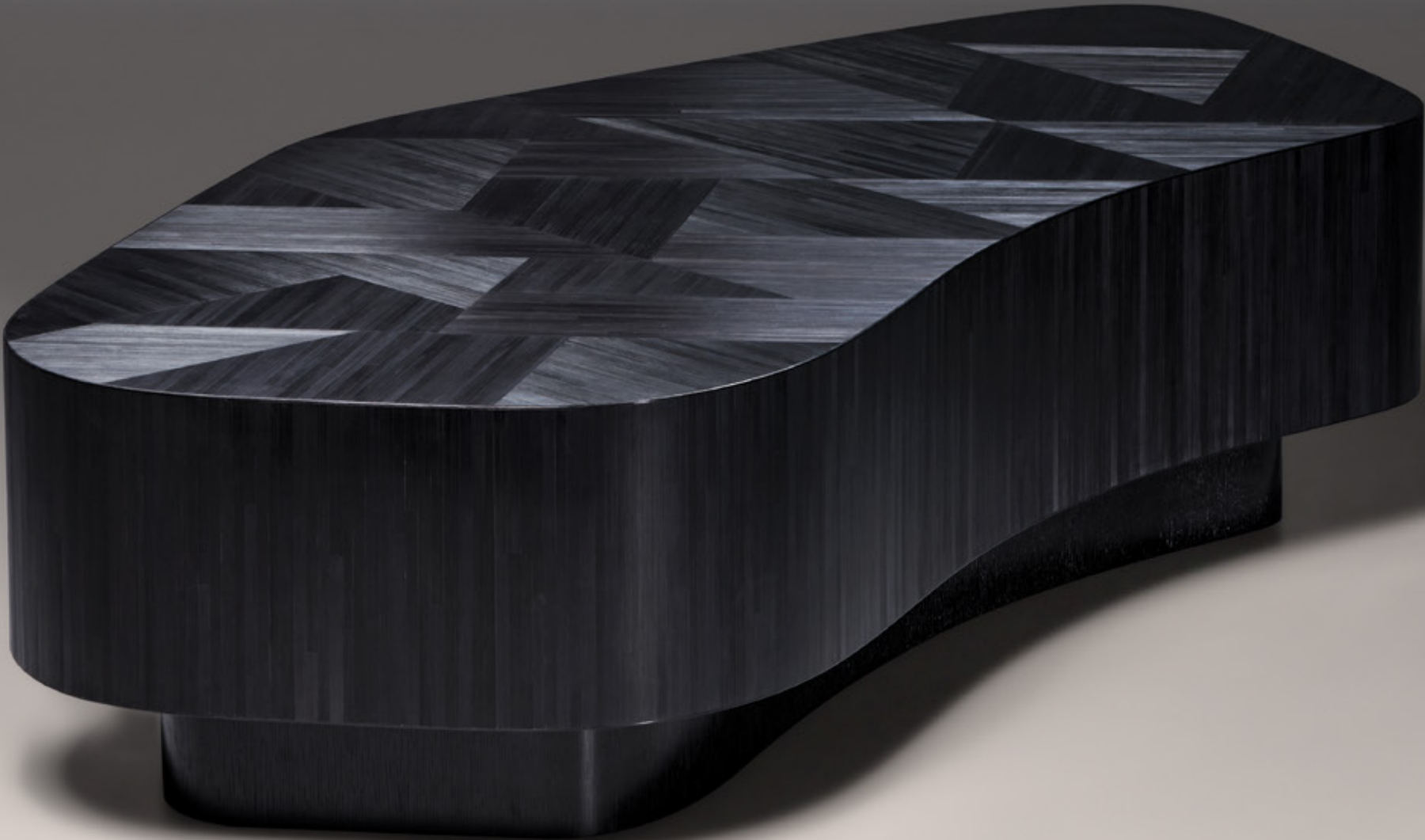




Kumo Cocktail Table | Ebony

Designed by Alberto Velez for the Malabares collection, Kumo is a soft flowing form with a vibrant geometric arrangement of dark or light-toned straw marquetry on the tabletop. The sculptural volume is raised on an Black Oak foot to create the sense of a floating surface.

W 32 1/4 L 67 H 15 1/8 in
W 82 L 170 H 38.5 cm





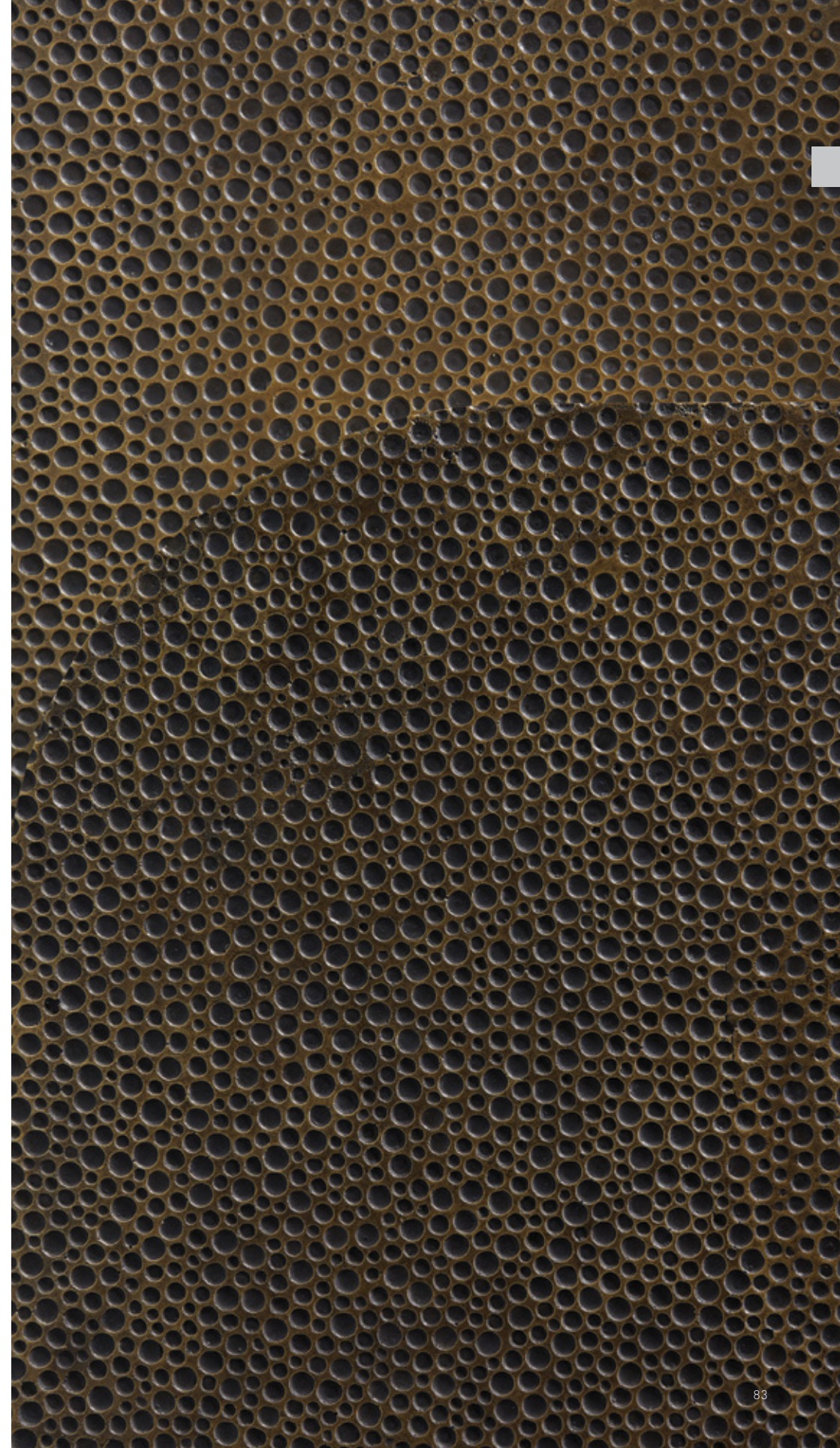


Kumo Cocktail Table | Beechwood

Glowing natural Beechwood straw marquetry follows the asymmetrical 'floating' form with a vibrant contemporary 'weave' pattern.

W 32 1/4" L 67" H 15 1/8 in
W 82 cm L 170 cm H 38.5 cm



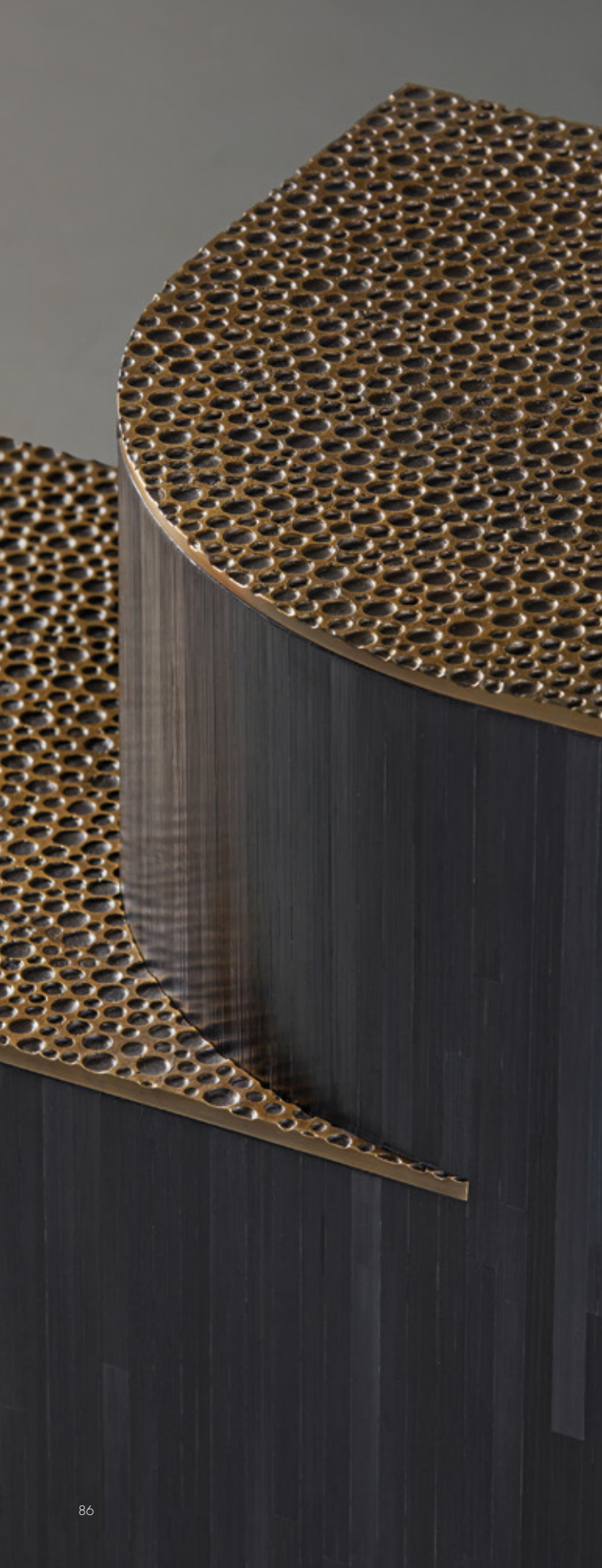




Estrigor Side Table | Beechwood

A stoic volume divided into alternate heights of cast, textured bronze, the Estrigor Side table plays with a tangent surface dynamic of opening and curving faces applied with dark or light-toned straw marquetry. A gorgeous accent piece designed by Alberto Velez for the Malabares collection.

W 13 L 28 H 21 1/4 in
W 33 L 71 H 54 cm



Estribor Side Table | Ebony

Lustrous straw falls like rain around this flowing contemporary form.

W 13	L 28	H 21 1/4 in
W 33	L 71	H 54 cm



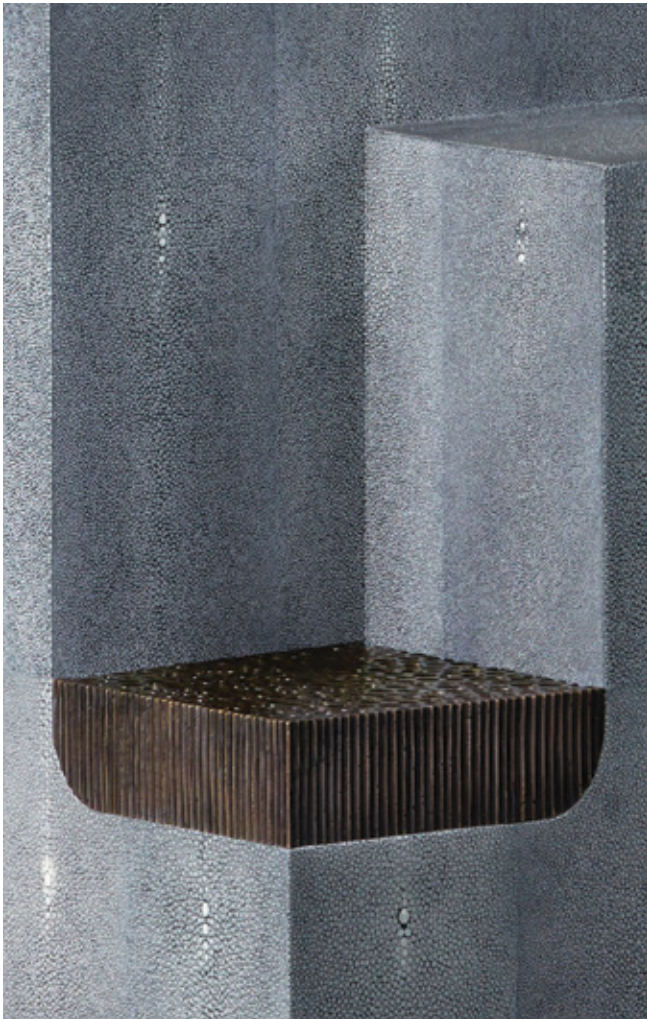


Malabar Spot Table | Natural Speckle

A confluence of geometry, sculpture and texture, the Malabar Spot table is a visually arresting element that presents cast bronze surfaces over an exquisitely crafted shagreen envelope. Designed by Alberto Velez for the Malabares collection.

W 12 1/4 L 12 1/4 H 19 1/2 in
W 31 L 31 H 49.5 cm





Malabar Spot Table | Charcoal Grey

W 12 1/4 L 12 1/4 H 19 1/2 in
W 31 L 31 H 49.5 cm





Corteza Console Table | Natural Distress

Elegant from all sides, Corteza explores notions of materiality and structure through Alexander Lamont's celebrated surfaces. Carved bronze concave pillars that echo the lines of rye straw, support a flowing volume of shagreen. Designed by Alberto Velez for the Malabares collection.

W 15 3/4 L 59 H 32 1/2 in
W 40 L 150 H 82.5 cm





Corteza Console Table | Natural Speckle

Shown in natural speckle shagreen, the Corteza console plays with asymmetry through sculptural and structural elements. Corteza is Spanish for bark - concave grooved legs giving a sense of this enveloping vital natural surface.

W 15 3/4 L 59 H 32 1/2 in
W 40 L 150 H 82.5 cm







Drift Table Lamp | Beechwood

Introduced this year as part of the Malabares collection, Drift offers sculptural volume enhanced by reflective straw marquetry surfaces and meticulous bronze details.

Ø 16 1/8 H 25 3/8 in
Ø 41 H 64.5 cm

Drift Floor Lamp | Beechwood

The Drift floor lamp is an ascending composition of shifting volumes enhanced by the flowing nature of straw marquetry in dark, light or custom tones. Cast bronze elements - a tiny ledge; a carved foot - adorn the intriguing lines.

Ø 19 1/4 H 62 in
Ø 49 H 157.5 cm







Drift Table Lamp | Ebony

Ø 16 1/8 H 25 3/8 in
 Ø 41 H 64.5 cm



Drift Floor Lamp | Ebony

Ø 19 1/4 H 62 in
 Ø 49 H 157.5 cm





ALEXANDER
LAMONT